

Fig No: **V-205**

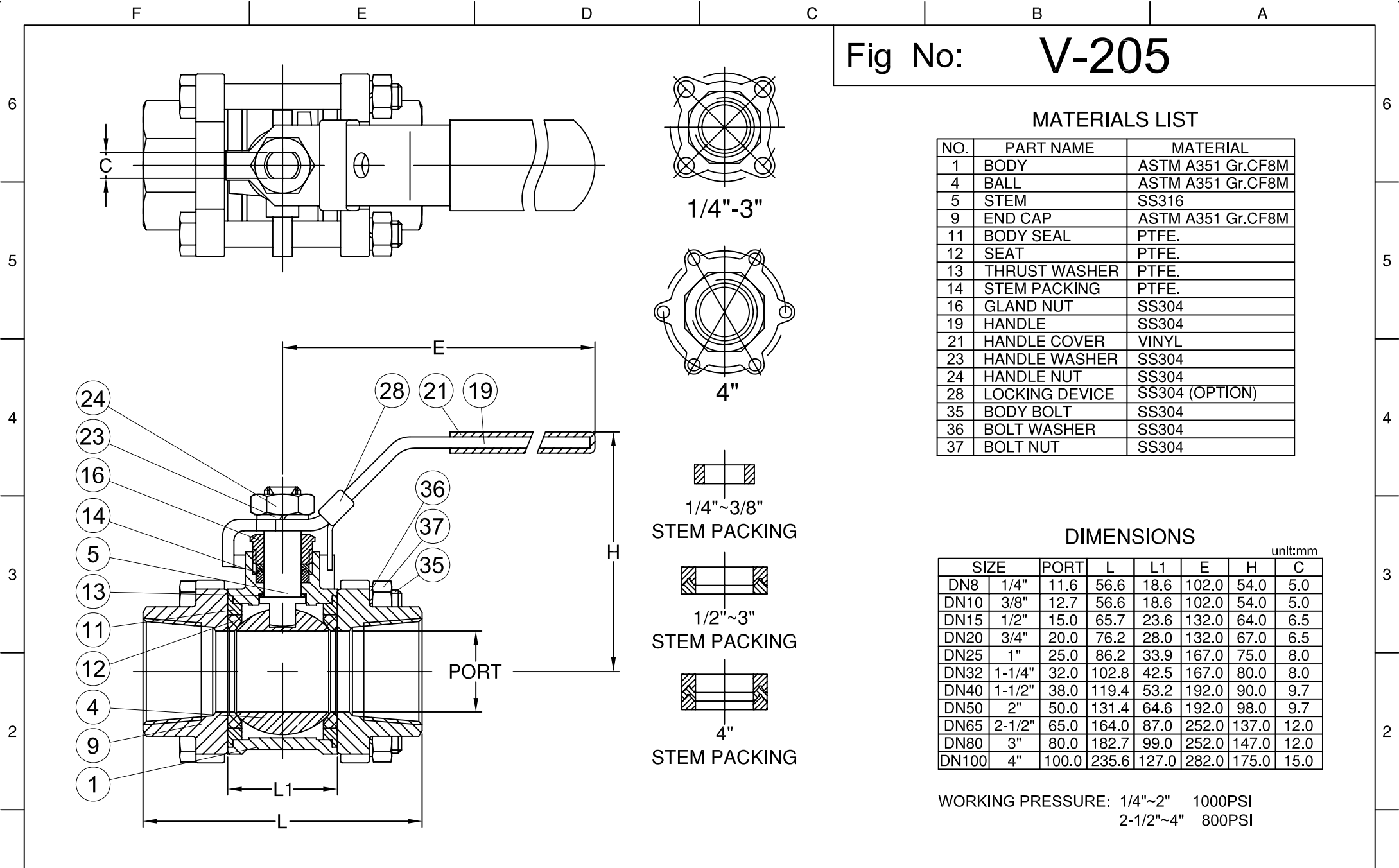
MATERIALS LIST

| NO. | PART NAME | MATERIAL |
|-----|----------------|-------------------|
| 1 | BODY | ASTM A351 Gr.CF8M |
| 4 | BALL | ASTM A351 Gr.CF8M |
| 5 | STEM | SS316 |
| 9 | END CAP | ASTM A351 Gr.CF8M |
| 11 | BODY SEAL | PTFE. |
| 12 | SEAT | PTFE. |
| 13 | THRUST WASHER | PTFE. |
| 14 | STEM PACKING | PTFE. |
| 16 | GLAND NUT | SS304 |
| 19 | HANDLE | SS304 |
| 21 | HANDLE COVER | VINYL |
| 23 | HANDLE WASHER | SS304 |
| 24 | HANDLE NUT | SS304 |
| 28 | LOCKING DEVICE | SS304 (OPTION) |
| 35 | BODY BOLT | SS304 |
| 36 | BOLT WASHER | SS304 |
| 37 | BOLT NUT | SS304 |

DIMENSIONS

| unit:mm | | | | | | | |
|---------|--------|-------|-------|-------|-------|-------|------|
| SIZE | PORT | L | L1 | E | H | C | |
| DN8 | 1/4" | 11.6 | 56.6 | 18.6 | 102.0 | 54.0 | 5.0 |
| DN10 | 3/8" | 12.7 | 56.6 | 18.6 | 102.0 | 54.0 | 5.0 |
| DN15 | 1/2" | 15.0 | 65.7 | 23.6 | 132.0 | 64.0 | 6.5 |
| DN20 | 3/4" | 20.0 | 76.2 | 28.0 | 132.0 | 67.0 | 6.5 |
| DN25 | 1" | 25.0 | 86.2 | 33.9 | 167.0 | 75.0 | 8.0 |
| DN32 | 1-1/4" | 32.0 | 102.8 | 42.5 | 167.0 | 80.0 | 8.0 |
| DN40 | 1-1/2" | 38.0 | 119.4 | 53.2 | 192.0 | 90.0 | 9.7 |
| DN50 | 2" | 50.0 | 131.4 | 64.6 | 192.0 | 98.0 | 9.7 |
| DN65 | 2-1/2" | 65.0 | 164.0 | 87.0 | 252.0 | 137.0 | 12.0 |
| DN80 | 3" | 80.0 | 182.7 | 99.0 | 252.0 | 147.0 | 12.0 |
| DN100 | 4" | 100.0 | 235.6 | 127.0 | 282.0 | 175.0 | 15.0 |

WORKING PRESSURE: 1/4"-2" 1000PSI
2-1/2"-4" 800PSI



| CODE | W-001 | APPROVED BY. | CHECK BY. | DRAWN BY. | DRAWINGNO. | MATERIAL | UNIT | DESCRIPTION |
|------|-------|--------------|------------|------------|-------------|----------------|------|--|
| | SIGN | PRESTON | POOLER | KIRA | V-205-W001 | MATERIALS LIST | mm | THREE PIECE. BALL VALVE, THREADED END, FULL BORE 1000/800PSI |
| | DATE | 09/26/2007 | 09/26/2007 | 09/26/2007 | REVISION 01 | SCALE | FREE | |