

Fig No: **V-205B**

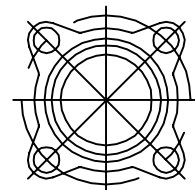
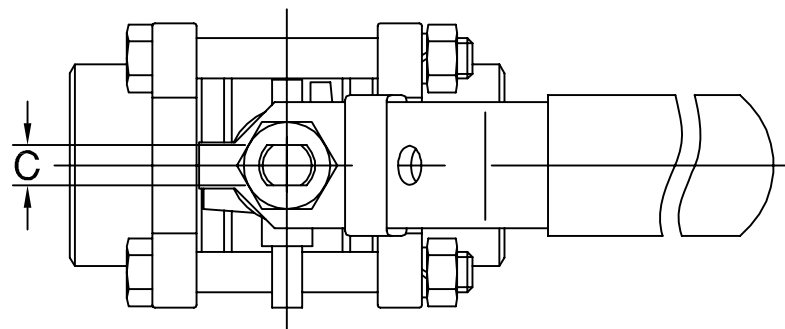
**MATERIALS LIST**

NO.	PART NAME	MATERIAL
1	BODY	CF8M / EN1503-2
4	BALL	CF8M / EN1503-2
5	STEM	SS316
9	END CAP	CF8M / EN1503-2
11	BODY SEAL	PTFE.
12	SEAT	RTFE.
13	THRUST WASHER	PTFE.
14	STEM PACKING	PTFE.
16	GLAND NUT	SS304
19	HANDLE	SS304
21	HANDLE COVER	VINYL
23	HANDLE WASHER	SS304
24	HANDLE NUT	SS304
27	ANTI STATIC BALL	SS316
28	LOCKING DEVICE	SS304
35	BODY BOLT	SS304
36	BOLT WASHER	SS304
37	BOLT NUT	SS304

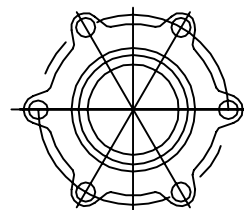
**DIMENSIONS**

SIZE		PORT	L	L1	E	H	C	T	BW
DN8	1/4"	11.6	56.6	18.6	102.0	54.0	5.0	1.6	16.2
DN10	3/8"	12.7	56.6	18.6	102.0	54.0	5.0	1.6	17.5
DN15	1/2"	15.0	65.7	23.6	132.0	64.0	6.5	1.6	22.7
DN20	3/4"	20.0	76.2	28.0	132.0	67.0	6.5	1.6	27.5
DN25	1"	25.0	86.2	33.9	167.0	75.0	8.0	1.6	34.0
DN32	1-1/4"	32.0	102.8	42.5	167.0	80.0	8.0	1.6	42.7
DN40	1-1/2"	38.0	119.4	53.2	192.0	90.0	9.7	1.6	48.6
DN50	2"	50.0	131.4	64.6	192.0	98.0	9.7	1.6	60.5
DN65	2-1/2"	65.0	164.0	87.0	252.0	137.0	12.0	2.0	76.3
DN80	3"	80.0	182.7	99.0	252.0	147.0	12.0	2.0	90.0
DN100	4"	100.0	236.2	127.0	282.0	175.0	15.0	3.5	116.0

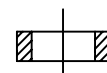
WORKING PRESSURE: 1/4"~2" PN 63  
2-1/2"~4" PN 40



DN8~DN80



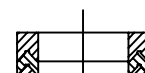
DN100



DN8~DN10

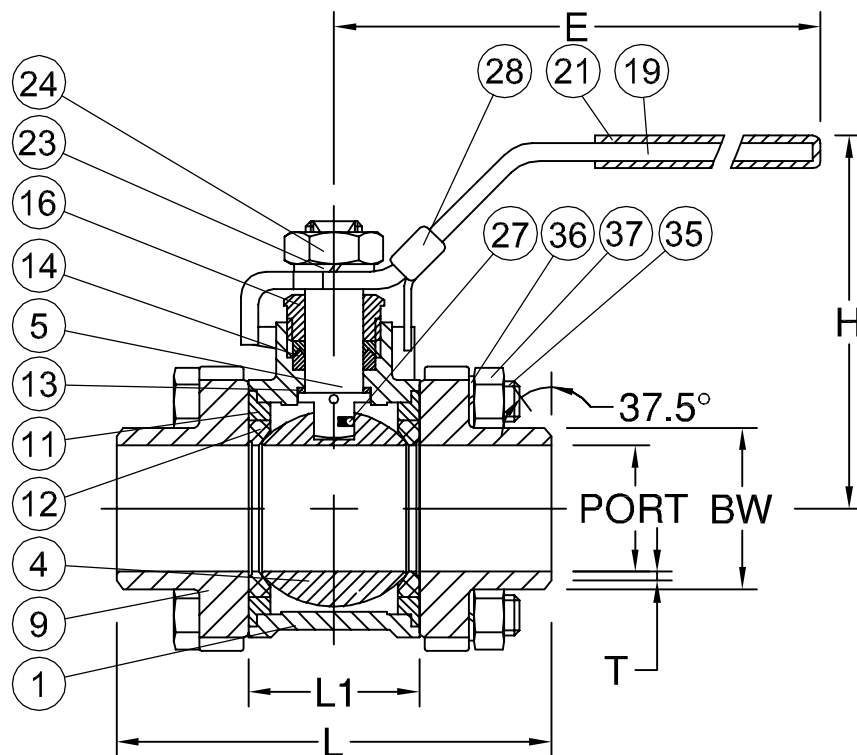


DN15~DN80



DN100

STEM PACKING



CODE	W-001	APPROVED BY.	CHECK BY.	DRAWN BY.	DRAWING NO.	MATERIAL	UNIT	DESCRIPTION
	SIGN	PRESTON	POOLER	SHANA	V-205-W001	MATERIALS LIST	mm	<b>THREE PIECE BALL VALVE, BUTT WELDING END, FULL BORE, PN 63 / 40</b>
	DATE	12/12/2007	12/12/2007	12/12/2007	REVISION	01	SCALE	